



Company Profile

Name	Sojitz Kyushu Corporation
Establishment	November 1, 1997
Capital	500 million yen (as of April 1, 2023)
President and CEO	Atsushi Koda
	<ul style="list-style-type: none"> ■ Headquarters ELGALA 4-2, Tenjin 1-chome, Chuo-ku, Fukuoka 810-0001, Japan TEL: +81-92-751-3308 FAX: +81-92-751-3093 ■ Nagasaki Branch Daidoseimei Nagasaki Bldg. 9F, 5-3, Sakura-machi, Nagasaki 850-0031, Japan TEL: +81-95-824-0101 FAX: +81-95-825-3691
Location	<ul style="list-style-type: none"> ■ Machinery Section 2 JR Kyushu Tobata Station Bldg. 2F, 1-1, Shioi-machi, Tobata-ku, Kitakyushu, Fukuoka 804-0067, Japan TEL: +81-93-882-7600 FAX: +81-93-882-0733 ■ Machinery Section 2 Oita Office Oita Tekko Bldg. 6F, 1-11, Matsubara-machi 3-chome, Oita 870-0913, Japan TEL: +81-97-558-9233 FAX: +81-97-558-9235
Employees	86 (as of April 1, 2023)
Institutional Shareholder	Sojitz Corporation

Executive Management

President and CEO	Atsushi Koda
	Naoko Noumi
Director	Koji Izutani
	Takahiro Matsunaga
Auditor	Kazuhisa Kawamura (Full-time Auditor)
	Tomohiro Nakatani

History

Nov. 1, 1997	Establishment of Nichimen Kyushu Corporation
Oct. 1, 2003	Nichimen Kyushu Corporation merged with Nissho-Iwai Kyushu Corporation, and Nichimen-Nissho-Iwai Kyushu Corporation was established.
Apr. 1, 2004	The name changed to Sojitz Kyushu Corporation

Business Philosophy

As a General Trading Company that links Kyushu to the world, we strive to be a company that grows hand in hand with Kyushu.

Company Slogan

**Connect Integrity,
Connect Empowerment,
and then go to the World**

President Message

As a General Trading Company that links Kyushu to the world, we strive to be a company that grows hand in hand with Kyushu.

As our company slogan, we embrace the ideas of “Connect, Integrity, Connect Empowerment, and then go to the World,” and this slogan carries sentiments that are shared among all our officers and employees: to forge links between people, companies, the global economy and culture with the spirit of “Integrity and Sincerity” expressed in the Sojitz Group statement, to widen the doors between Kyushu and the world, and to be a company that continues to forge a path forward with members of the local community.

Sojitz Kyushu Corporation is a community-based trading company whose operations cover a territory spanning the seven prefectures of Kyushu and Okinawa, with headquarters in Fukuoka and branch offices in Nagasaki. Kyushu has long prospered as a gateway of economic and cultural exchange with mainland China, the Korean Peninsula and Southeast Asia and today offers a wealth of human resources and solid infrastructure for a broad scope of business activities ranging from primary to state-of-the-art industries. Utilizing the geographic advantage of basing locations at the long-established and leading trading ports of Hakata, Nagasaki, we engage in a wide range of business activities linking Kyushu to the world.

To further promote trade with countries in Asia and around the world and cater to diverse needs in various fields with precision, while forging ties with the community, earning the trust of local customers and enhancing regional lives and industries, we will continue to pursue operations as a truly community-based trading company affiliated with Sojitz Group.

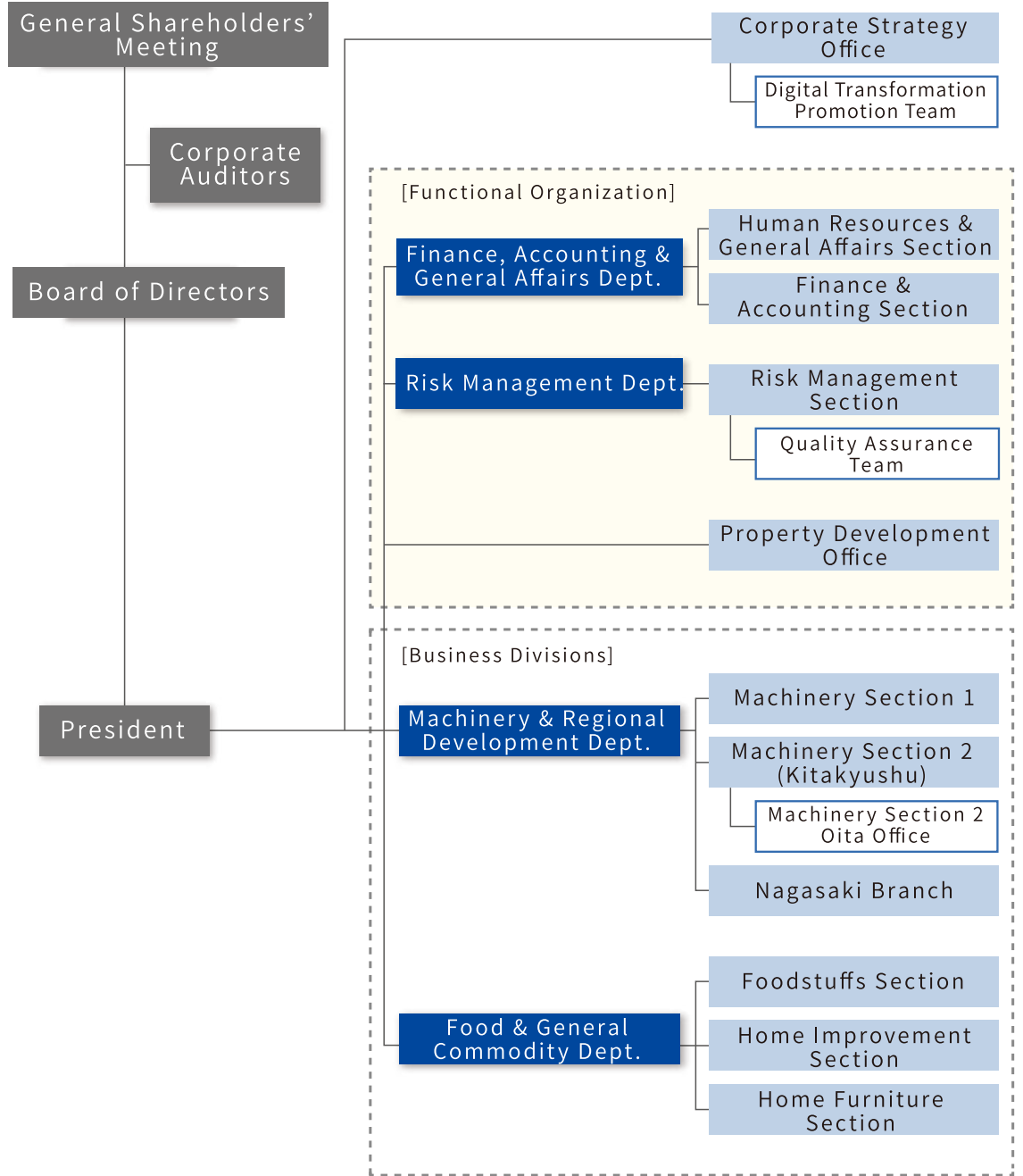
Through steady efforts to put the Group’s statement into practice, we seek to attain coexistence and mutual benefit between our corporate activities, society and the environment.

We look forward to your continued support and understanding.

Sojitz Kyushu Corporation
President **Atsushi Koda**



Organizational Chart



We are developing pleasant living environments for all in communities.

We have supplied the condominiums under the brand, "Resion". Sojitz Kyushu Corporation, the trading firm which has the base in Kyushu, supply the pleasant living environments and has been popular with all Sojitz Kyushu condominium customers.

All units in "Resion Sunriant Terukuni-cho", our 12th condominium in Kagoshima city in the form of joint venture with Nishi-Nippon Railroad Co.,Ltd., were sold out in March 2013, thanks to all of you.

Our Condominiums

Fukuoka

"Nissho Iwai Imaizumi Mansion," "Nissho Iwai Resion Ohori," "Nissho Iwai Resion Yakuin" and others 16 condominiums and 884 apartments

Kagoshima

"Resion Nagata-cho," "Resion Minamikagoshima Second," "Resion Arata""Resion Sunriant Terukunichou Shiroyama Hills" and others 12 condominiums and 695 apartments



"Resion Arata"
(Completed in March,2007)



"Resion Sunriant Terukunichou Shiroyama Hills"
(Completion schedule March,2013)

Machinery Section 1&2

We try to develop new business models based on our machinery businesses to key industries.

We are in business to offer various machines for steel producing, industrial machines, industrial robots to major Japanese key industrial companies such as Nippon Steel Group, Kobe Steel Ltd. Group, Kyushu Electric Power Co., Inc., Toyota Motor Kyushu Inc. Mitsubishi Heavy Industries, Ltd., and Hitachi, Ltd. Besides the above, we have been in business to lend large size compressors necessary for drilling wells at plants for geothermal power plants, which are considered to be one of the main clean energy sources. We take pride in our contribution to the CO2 emissions reduction through our business.

Our major business lies in machine sales, but at the same time we have plans to invest in and create promising businesses, as we, along with Kyushu Electric Power Co., Inc. and Sojitz Corporation, have invested in a power plant construction project in Vietnam.

Furthermore, we are promoting efforts in renewable energy fields (e.g. solar energy and wind power) to contribute to regional creation and maintenance of the global environment through the renewable energy business.

Business Vision

Machinery Section 1

Machinery for Auto Manufacturers

We are acting as a sales agent along with Sojitz Machinery Corporation for welding/painting robots by Kawasaki Heavy Industries Ltd. and die-casting machines by Ube Machinery Corporation, Ltd. for Toyota Motor Kyushu, Inc. We are contributing to the automobile production in their Miyata Plant, Kanda Plant and Kokura Plant.

Welding robot produced by Kawasaki Heavy Industries Ltd.



Industrial Machinery



We are acting as an exclusive sales agent both in Japan and abroad for Fujisanki Inc., and is achieving the contract track record constant every year.

In the field of semiconductors, we are assisting in the continuous sales of lapping plates produced by Hitachi Zosen Corporation to major silicon wafer manufacturers.

Parallel-Surface Honing and Grinding Machine produced by Fujisanki Inc.,

Investment in Power Plants

We invested in Phu My 3 Power Station in Vietnam, a construction project in collaboration with Kyushu Electric Power Co., Inc. and Sojitz Corporation. This power station started its commercial operation in 2004 and has been providing electricity steadily.

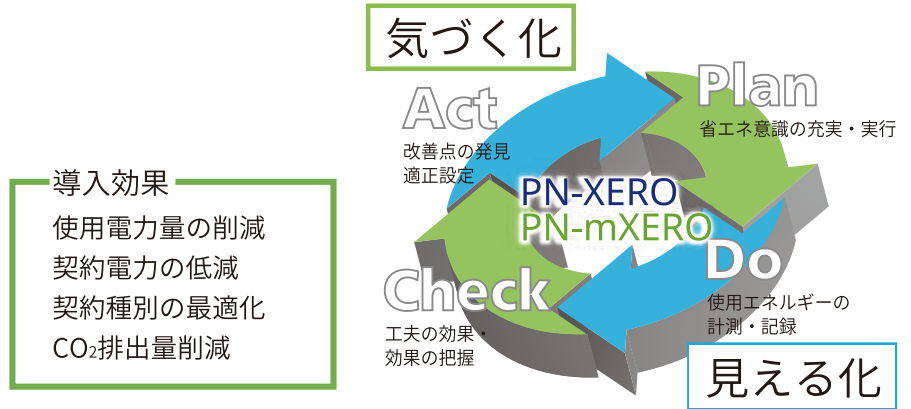
We have been working in cooperation with Sojitz Corporation to support Kyushu Electric Power Co., Inc. in developing overseas projects.

Phu My 3 Power Station in Vietnam which started its commercial operation



Automatic Energy Optimization System

Sojitz Kyushu has been a sales agent of the Energy Optimization System “PN-XERO” (Maker: PAL-COSMO) which efficiently inhibit power consumption as well as peak power which determines a minimum energy charge(basic charge) in retail stores, office buildings and other facilities. It can realize reduction of basic charge while reducing power consumption from the following month of the month in which the system was installed. We are actively promoting this system as an eco-friendly product.



Energy Field

Cooperating with Sojitz Corporation, we are supplying Kyushu Electric Power Co., Inc. with nuclear fuel, coal, heavy oil etc. as energy sources for electric generation. Japan is poor in natural resources and dependent on foreign countries for them. In such a situation, we are taking full advantage of the global network as one of the strengths of trading companies in order to ensure a long-term stable supply of energy.

The open-cut operation site in Minerva coal mine in Australia, in which Sojitz Corporation holds a 96% interest



Instruments for Wind-Generated Power Facilities



We are selling speed-up gears which are main instruments of large-scale wind-generated power facilities as new energy power facilities, and balsa wood for rotor blades. We also established a maintenance company in Houston, Texas, US through joint investment with Ishibashi Gihann Co., Ltd. (the nation's largest manufacturer of speed-up gears for wind-generated power), which is the parent company of Ishibashi Manufacturing Co., Ltd., to develop after-sales service business in the US wind-generated power market.

We handle major instruments for wind-generated power produced by Mitsubishi Heavy Industries, Ltd.

The Field of Renewable Energy

The promotion of renewable clean energies are imperative need for us to cope with the global warming which is one of the critical issues all the people on earth have to contemplate. Regarding it as a crucial request from our society, we are diligently working on the business field of renewable energies, such as solar energy, wind power, and biomass energy.



The solar power plant which is operated by Mirai Soden Kami-Mio Corporation (Ownership: Sojitz Corporation – 42%, Sojitz Kyushu Corporation – 18%)

■ DX (Digital Transformation)



We support your DX business promotion which is every situation from the “requirement definition”, “PoC / PoV”, “introduction” to operation for problem solving by utilizing the knowledge about various elemental technologies such as “Sensor Device”, “Communication”, “Cloud”, “Application”, and “AI”, etc. that we have cultivated so far and the network of the Sojitz Group.

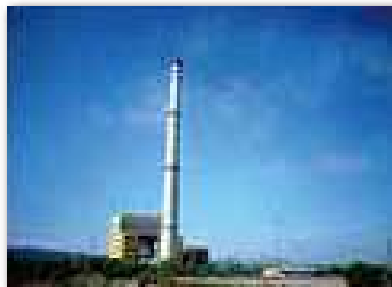
|| Machinery Section 2

■ Machinery and Equipment to Steel Industry and Nonferrous Metals Industry

We sell equipment to Kyushu Works of Nippon Steel Corp. (Yahata/Oita area), and Kobe Steel Ltd. Group. We are engaged in daily sales activities to build a solid foundation which will not be affected by the conditions of the economy.



■ Machinery and Equipment to Plant Makers



We mainly sell machinery and equipment to Nippon Steel Engineering Co., Ltd. We have dealt in many items such as equipment for steel producing, shredding equipment for a garbage incinerator, carrier devices and equipment related to environmental protection such as equipment monitoring PCB emissions.

Foodstuffs Section

We aim to develop new businesses centered on Kyushu, focusing on "export of Japanese foods" in the Food sector, and "development of value-added products" in the Feed and Fertilizer sector.

Making the most of Kyushu's geographical advantage as a gateway from/to Asia, we import food materials, processed foods, fishery products, coarse feed, livestock feed materials, fertilizers, etc. from countries all over the world such as China, ASEAN countries, the United States, Canada, Europe, Australia, South America, and sell them mainly to local companies in Kyushu. At the same time, we also export Kyushu products to the world such as processed agricultural products, processed fishery products, processed livestock products, various other foods, beverages, and Japanese sake produced by local companies in Kyushu.

We will continue to contribute to the development of the food, livestock/dairy, fishery and agriculture industries in Kyushu through our community-based business. As a part of this, we are determined to actively invest in promising business projects in order to foster local industries and secure resources.

In addition, the Sojitz Group will work together as one to carry out detailed management and verification work in the selection of reliable overseas food factories, audits of production factories, checks of traceability and residual agricultural chemicals, observation of production, etc. to provide safe and secured food.

Business Vision

■ Processed foods, Export

We supply a wide variety of food materials (flour, fats, wheat gluten, etc.) to local food manufacturers while exporting their products to countries all over the world such as China, Taiwan, Hong Kong, Korea, South East Asia, etc. In addition, We work with the local government of Kyushu on exporting products from Kyushu to mainly China.

TEL: +81-92-751-3164



Image of trial sales at a supermarket in Shanghai, being entrusted with the export promotion project from Kumamoto Prefecture

■ Marine Products

The Sojitz Group actively promote the export of high quality tuna, yellowtail, sea bream, striped jack mackerel, etc. produced by local fish farms, centering on bluefin tuna cultivated in Takashima Island of Nagasaki Prefecture. We also import processed shrimp from Vietnam and sell crabs to an online shopping service. As for farming, together with sales of system equipment such as fish weight measuring device, we support the aquaculture industry also by selling packaging materials such as polystyrene foam, as well as fishery food and its materials.

TEL: +81-92-751-3164



Image of picking up bluefin tuna



yellowtail produced by local breeders

■ Livestock Feeds

We contribute to the local livestock industry by importing high quality hay, hay cubes, cotton seeds, etc. from Europe (Spain) and provide them to local dairy and beef farms via major feeds wholesalers.

TEL: +81-92-751-3164



Corn as a raw material for silage (Spain)



Baled hay (Spain)

■ Fertilizers

We mainly sell organic fertilizers, chemical fertilizers, soil conditioners, etc. imported from China, as well as domestically-produced fertilizers to local major companies and home centers.

In recent years, utilizing the beer yeast cell wall component created from the research and development of Asahi Group Holdings, Ltd. which owns a major Japanese beer company, we have started manufacturing and selling the functional liquid fertilizer "Gungun-Nobiru-Ne", and it has met the various needs of agricultural producers.

TEL: +81-92-751-3164



Home Improvement Section, Home Furniture Section

Good Quality! Good Price!

Purchasing from blue-chip manufacturers from home and abroad, we are providing our clients and customers with a wide range of products mainly dealt in do-it-yourself home centers, including wood products, gardening supplies, household goods, stationery, Christmas goods, pet foods, tools, working goods, outdoor home products, interior goods, footwear, finished furniture such as sofas, beds and dining-room sets, and knock-down furniture.

We have cultivated our selected suppliers from home and abroad over a number of years. By developing products in great detail with them, and also by cooperating with the extensive world-wide network of foreign branches of the Sojitz group, we have established an effective system by which we can guarantee to deliver products that our clients will surely find satisfactory.

In addition, we intend to examine the possibilities of investment in promising business pursuits in a positive manner.

In introducing new products, we keep safety first and foremost, and deal in only those products which have passed inspections under relevant regulations. We have a system in which safety is ascertained so that our customers can rest assured in using our products.

To meet various demands from the market, we would like to be the best partner of lifestyle products, not only furniture but also interior and commodity items.

Business Vision

Home Improvement Section

Exterior & Working Products

Wooden building material, ply wood, gardening supplies, tools, working supplies, metallic gauze fence, etc.



TEL: +81-92-751-3312

Interior Goods

Household goods, stationery, Christmas goods, pet foods, etc.



TEL: +81-92-751-3312

|| Home Furniture Section

■ Furniture

Sofas, beds, mattress, dining-room sets, knock-down furniture, series furniture, etc.



TEL: +81-92-751-3341

■ Houseware product

Bag, pouch, smart phone case



TEL: +81-92-751-3341

Nagasaki Branch

We are developing high-value added new business centered on “Ships/Nonferrous metals” and “New energy/Environment”.

As a linchpin of Sojitz Kyushu Corporation and the Sojitz group, the Nagasaki branch is focusing its business on promising fields related to high-value added ships, new energy facilities, nonferrous metals and the environment.

With our two pillars, machinery-related commercial rights and non-ferrous metal-related rights, we, the Nagasaki branch, are aiming to further expand and to permanently develop our business in both fields, focusing on competitiveness, profitability and growth potential as well as eco-friendliness and social responsibility.

Business Vision

With Mitsubishi Heavy Industries, Ltd., Mitsubishi Shipbuilding Co., Ltd., and Mitsubishi Power, Ltd. as our primary clients, we sell facilities and equipment for thermal power plants and plant facilities, ship equipment and aluminum castings and forgings for high value-added ships (LNG carriers, LPG carriers, passenger ships, ferries and special ships), naval vessels and torpedoes.

In addition, we are also engaged in import and domestic sales of turbochargers, marine turbines, marine boilers, special equipment, machinery and materials for propellers, which are the major products of Mitsubishi Heavy Industries Marine Machinery & Equipment Co., Ltd.

We also handle sales of Cryostar's gas compressors, Kongsberg-Maritime's LNG tank level gauges (radar type) for high value-added ships built by Mitsubishi Shipbuilding Co., Ltd. (LNG carriers, LPG carriers, passenger ships, ferries and special ships), Marioff's water mist fire extinguishing systems and other key equipment for passenger ships. We also sell special products made of aluminum, electric propulsion systems, etc. for naval vessels and torpedoes.



Continuous Tank Cover Spherical Tank LNG Carrier, “SAYAENDO” (Photo courtesy of the Nagasaki Shipyard and Machinery Works of Mitsubishi Heavy Industries, Ltd.)



Supercharger Impeller for Vessels.

Sales of Gas Compressors for LNG Carriers and LNG Fuel Carriers



Cryostar's 4 Stage Gas Compressor for LNG Carriers with DFDE Engines

We are a sales agent of Cryostar, a company based in France. For LNG carriers, Vapor Return Compressors which are indispensable to the loading and unloading of cargo at LNG terminals for tank operations, as well as LNG Vaporizers, Gas Heat Exchangers, etc. have been widely adopted. Also, to comply with recent environmental regulations, Dual Fuel Engine Compressors are adopted by many customers as propulsion systems for ships that are fueled by LNG which meets CO₂, SO_x and NO_x emission controls. In addition to the conventional steam turbine engine, Dual Fuel Engine Compressors ensure the safe consumption of boil-off gas resulting from volatilization in the cargo tank. Cryostar is now the leading manufacturer, supplying its systems to more than 80% of the LNG carriers in the world.



Cryostar's 300-bar High Pressure Pump for Low-Speed Gas/Heavy Oil Dual-Fuel engines

■ Sales of Automation Control Systems for Offshore Ships and LNG Carriers

We are a sales agent of Kongsberg Maritime, a leading manufacturer of ship control system based in Norway. Its Dynamic Positioning Systems (DPS) such as DP, K-Pos, K-Thrust, K-Chief Integrated Automation System (IAS), and K-Bridge Integrated Bridge System (IBS) have been adopted by many customers all over the world. Especially, it holds the industry's largest market share for offshore ships, LNG carriers and passenger ships. We will try to grasp the customers' needs, and positively expand sales activities to satisfy their needs in the promising fields of offshore ships, LNG carriers and passenger ships.



This system is called the Integrated Bridge System. It incorporates different kinds of navigation instruments, such as the APRA/Radar system, the Electronic Chart Display and Information System (ECDIS) and the Autopilot automatic operation system, in the cockpit so that almost all sailing information can be centrally managed and operated from within the operator station.



Kongsberg Maritime's K-Bridge radar scanner



Kongsberg Maritime's K-Bridge operator station

■ Non-Ferrous Metals Field

Taking advantage of our own long-established global network, including domestic and Asian routes, we are exporting/importing as well as selling domestically various nonferrous metal raw materials such as copper, titanium and aluminum.



Aluminum ingot



An example of nonferrous metal products

TRIART & IT PROJECT

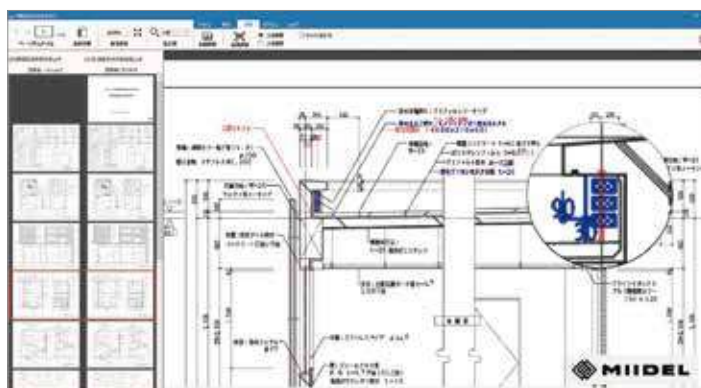
New way, New value with TRIART !!!

We decided to enter into the IT related business on a full-scale basis in September 2017. We signed a business partnership with TRIART Co., Ltd. (Head Office: Iizuka, Fukuoka; hereinafter TRIART), an R&D-based venture company originating from the Kyushu Institute of Technology as the first step in this initiative. We are continuing to work hard every day to sell various advanced technologies developed by TRIART in Japan and overseas.



We are also working to develop new business based on the fourth industrial revolution in this project. In addition, our business partner TRIART specializes in R&D linked with universities and scientific societies. It is a company with advanced development capabilities and results in cutting edge fields, such as solutions to prevent the leakage of information for Toyota Motor Kyushu Inc. We are looking to increase the sophistication of marketing the technologies that TRIART has developed by undertaking these sales activities.

We started selling the Miidel image analysis difference system that can be used in construction, civil engineering and other sites as the first step in our business partnership.



Miidel Operation Screen

Miidel is a system that can compare and check drawings without humans for the fine tuning parts of drawings that need to be checked by professionals. The system is equipped with artificial intelligence (AI) functions that automatically adjust the scaling and distortion of drawings to achieve this.

It takes a long time and a lot of effort to check changes that have been made to drawings in the construction industry. Meanwhile, subtle changes to drawings are often overlooked. This results in a massive impact on quotations and construction costs. There have been many cases where this has led to a squeeze on profits and an extension to the construction period. Miidel is able to compare thousands of PDF drawing data output from CAD and scanned data at once. Furthermore, the system is also able to output the state of compared drawings as a PDF, so it is also easy to fine tune the compared drawings.

Sojitz Kyushu will take the opportunity of this business partnership with TRIART to speed up sales of innovative technologies that have a high level of superiority even on a global basis, such as TRIART's security technologies and IoT/AI related technologies currently under development. The Sojitz Group plans to proactively engage in overseas development, including in Asia, by taking advantage of our business base (e.g. our distribution network with results in other countries in addition to Japan) and human network.

Overview of Our Business Partner TRIART

President and CEO	Kentaro Imazu
Company Name	TRIART Co., Ltd.
Business contents	IT solutions business, IT consulting business, Internet media business, information design business, etc.

Inquiries about This Matter

Sojitz Kyushu Corporation Yamaguchi / Kaneoka

【TEL】 +81-92-751-3076

【e-mail】 yamaguchi.takaki@sojitz-kyushu.com
kaneoka.yuji@sojitz-kyushu.com



Sojitz Kyushu Corporation

ELGALA 4-2, Tenjin 1-chome, Chuo-ku, Fukuoka
810-0001, Japan

TEL: 81-92-751-3308 FAX: 81-92-751-3093